

No. 14 Recitative and Song - (Ludwig) with Chorus

Andante

LUDWIG:

Your loy - al - ty our Du - cal heart - strings touch - es: Al -

low me to pre - sent your new Grand Duch - ess. Should she of - fend, you'll gra - cious - ly ex - cuse her - And

kind - ly re - col - lect I did - n't choose her!

At the

11

out - set I may men - tion it's my sov - er - eign in - ten - tion To re - vive the clas - sic mem - o - ries of

14

A - thens at its best, For the com - pa - ny pos - sess - es all the ne - ces - sa - ry dress - es And a

17

course of qui - et cram - ming will sup - ply us with the rest. We've a choir hy - por - che - ma - tic (that is,

20

bal - let - o - pe - ra - tic) Who re - spond to the cho - reu - tæ of that cul - ti - va - ted age, And our

23

clev - er cho - rus - mas - ter, all but cap - tious cri - ti - cas - ter Would ac - cept as the cho - re - gus of the

27

26

ear - ly At - tic stage. They wore lit - tle un - der - cloth - ing - scarce - ly a - ny - thing - or no - thing - And their

29

dress of Co - an silk was quite trans - par - ent in de - sign - Well, in fact, in sum - mer wea - ther, some - thing

32

like the "al - to - geth - er." And it's *there*, I rath - er fan - cy, I shall have to draw the line!

(Confidentially to audience.)

35



At this junc - ture I may men - tion That this e - ru - di - tion sham Is but

35

39



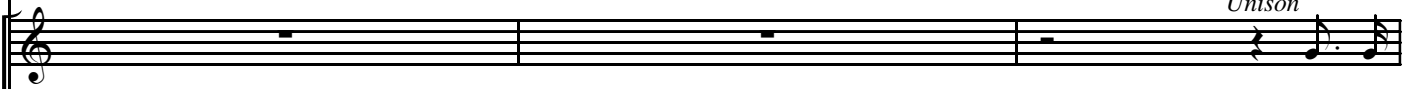
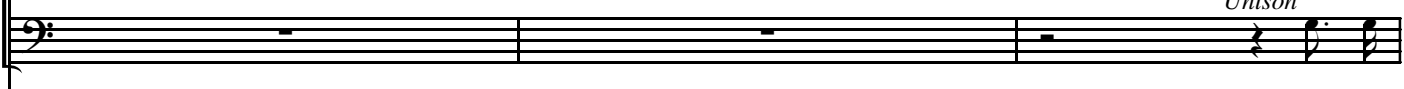
clas - si - cal pre - ten - sion, The re - sult of stea - dy "cram." Yet my clas - sic lore ag - gres - sive (If you'll

39

42



par - don the pos - ses - sive) Is ex - ceed - ing - ly im - pres - sive When you're pas - sing an ex - am.

Unison**CHORUS:** Yet his*Unison*

42

45

clas - sic lore ag - gres - sive (If you par - don the pos - ses - sive) Is ex - ceed - ing - ly im - pres - sive When you're

45

48

pas - sing an ex - am.

48

52

52 **Andante maestoso** *Unison f*

Wreaths of bay and i - vy twine, E - loi - a! E - loi - a! —

Unison f

52

58

Fill the bowl with Lesbian wine, — And to revelry in-cline— E-loi - a! O-

58

62

po-po-nax! O-po-po-nax! O-po-po-nax! E - loi - a! O - po-po-nax! O-po-po-nax! O-po-po-nax! E-

O - po-po-nax! O-po-po-nax! O-po-po-nax! E - loi - a! E-

62

65

loi - a! E - loi - a! E - loi - a!

loi - a! E - loi - a! E - loi - a!

65

ff

(Exeunt Chorus. Manent LUDWIG, JULIA, and LISA.)